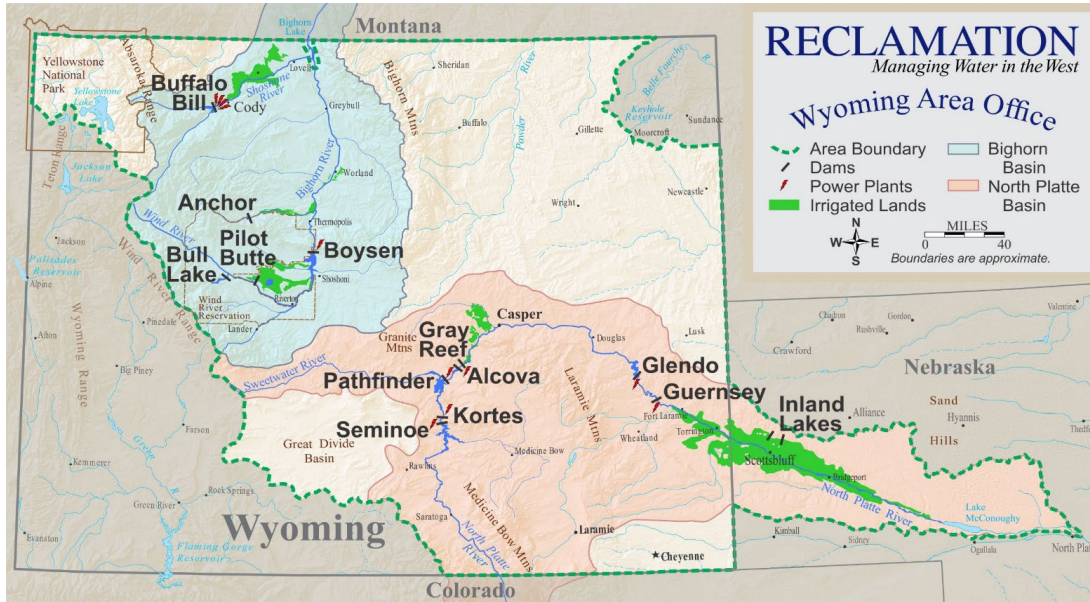




North Platte River Basin Water Supply and Utilization Report Wyoming Area Office Report for April 2026



The Wyoming Area Office of the Bureau of Reclamation is responsible for the operation of Reclamation reservoirs in Wyoming east of the Continental Divide except for Keyhole Reservoir. Four off-stream reservoirs in Nebraska commonly referred to as the Inland Lakes also fall within the Wyoming Area. The North Platte River Basin Reservoirs have a combined storage capacity of 2,800,000 acre-feet. The major reservoirs in the Shoshone and Wind/Bighorn Basins have a combined storage capacity of 1,600,000 acre-feet.

Report for April 2026
WATER SUPPLY AND UTILIZATION REPORT
NORTH PLATTE RIVER BASIN
WYOMING AREA OFFICE

This report concerns the operation of Reclamation facilities in the North Platte River River Basins.

Reclamation defines a water year as the time period of October 1 through September 30. Water year is abbreviated in this report as W. Yr.

Other organizations furnished information for the Water Supply and Utilization Report. Their cooperation is greatly appreciated.

This report is available on the Internet and can be accessed by following these steps:

- 1. Log on to the Missouri Basin and Arkansas-Rio Grande-Texas Gulf Regions Home Page at <http://www.usbr.gov/gp>**
- 2. Select Water Operations.**
- 3. Select Water Management Information.**
- 4. Select Water Supply Report.**
- 5. Under North Platte River Basin, select the current report or reports from the previous 12 months.**

NORTH PLATTE RIVER BASIN INFLOW

April Inflow and Historical Inflows, values in 1,000 acre-feet

Reservoir	W. Yr. 2026 ⁶	30 Yr. Avg. ⁵	30 Yr. Med. ⁵	% of Med.	W. Yr. 2025	W. Yr. 2024	W. Yr. 2023
Seminoe	55.3	102.2	100.5	55%	61.7	111.4	131.1
Pathfinder ^{1,2}	6.2	16.0	15.8	39%	13.0	17.1	15.5
Glendo ³	8.2	44.4	41.4	20%	16.8	30.0	33.6
Guernsey ⁴	0.7	4.7	3.6	18%	2.7	0.4	-3.1
System Total	70.3	167.3	161.4	44%	94.2	158.9	30.0

1 It is assumed that there is no gain between Seminoe and Kortez Dams.

2 River gain between Kortez and Pathfinder Dams.

3 River gain between Pathfinder and Glendo Dams.

4 River gain between Glendo and Guernsey Dams.

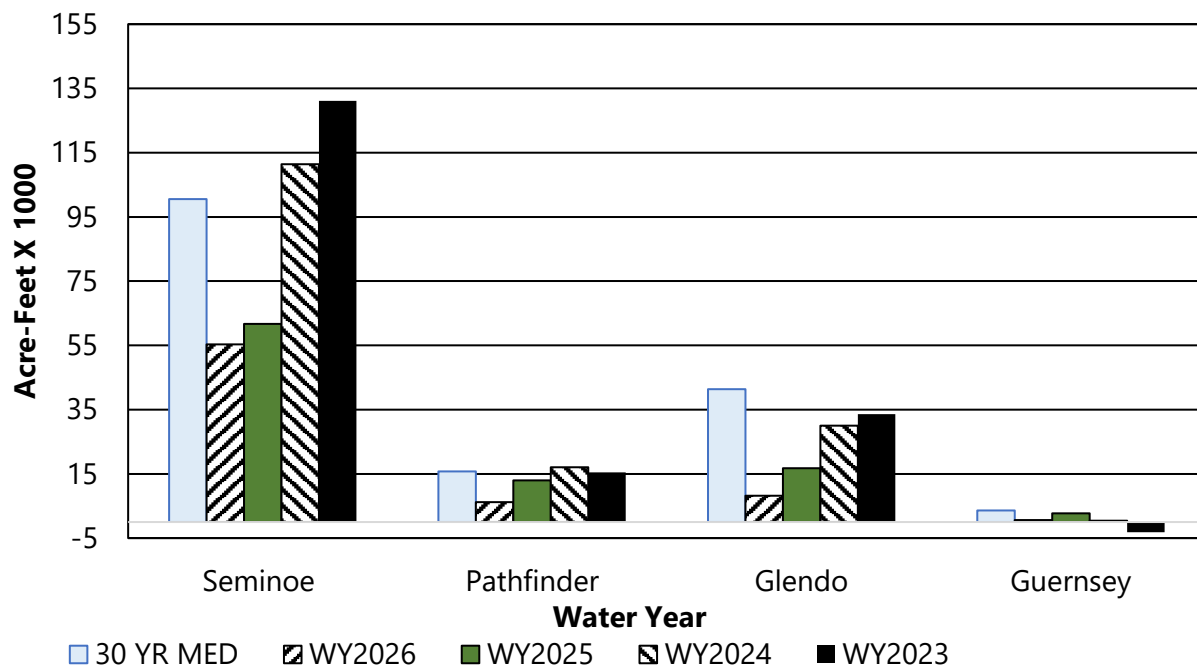
5 30 year average and median. (1996-2025)

6 W. Yr. 2026 covers the period October 1, 2025 to September 30, 2026.

April Accumulated Water Year Inflows, values in 1,000 acre-feet

Reservoir	W. Yr. 2026 ⁶	30 Yr. Avg. ⁵	30 Yr. Med. ⁵	% of Med.
Seminoe	227.0	293.0	288.3	79%
Pathfinder ^{1,2}	0.2	51.8	49.3	0%
Glendo ³	46.9	107.7	103.1	45%
Guernsey ⁴	5.9	14.3	14.7	40%
System Total	280.0	466.8	455.4	61%

APRIL NORTH PLATTE RIVER BASIN RESERVOIR INFLOW



NORTH PLATTE RIVER BASIN OUTFLOW

April Outflow and Historical Outflows, values in 1,000 acre-feet

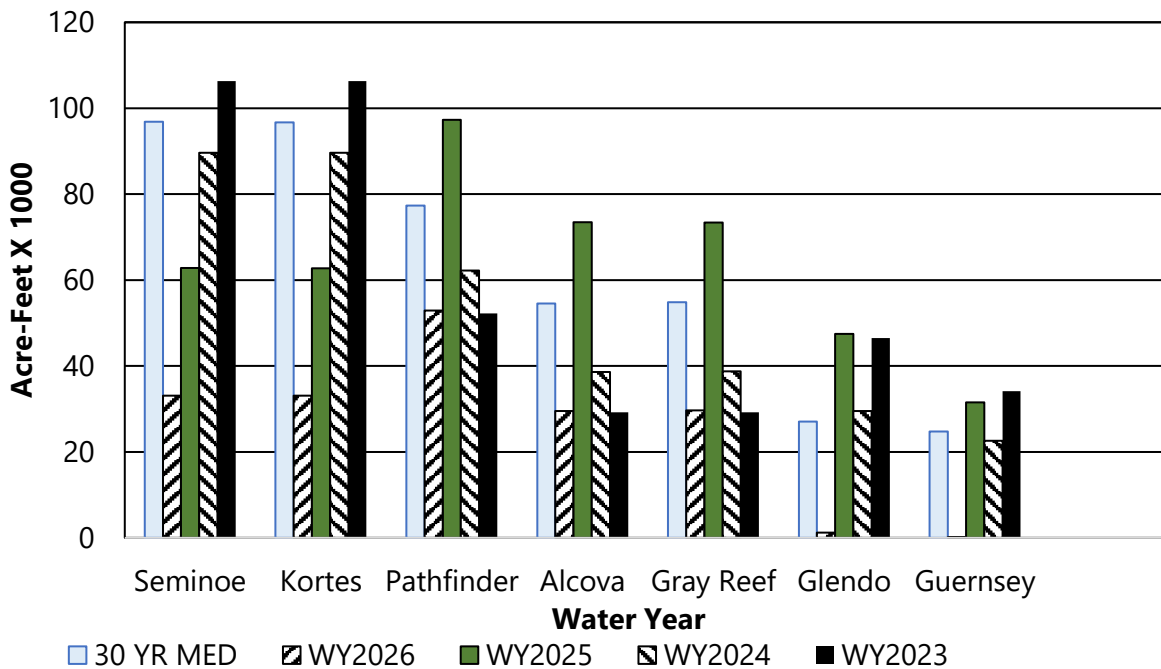
Reservoir	W. Yr. 2026	30 Yr. Avg. ¹	30 Yr. Med. ¹	% of Med.	W. Yr. 2025	W. Yr. 2024	W. Yr. 2023
Seminole	33.1	103.6	96.8	34%	62.8	89.6	106.3
Kortes	33.1	103.6	96.7	34%	62.8	89.6	106.3
Pathfinder	52.9	95.4	77.3	68%	97.3	62.2	52.2
Alcova	29.5	72.5	54.6	54%	73.5	38.6	29.2
Gray Reef	29.7	72.6	54.9	54%	73.4	38.7	29.2
Glendo	1.2	52.2	27.1	4%	47.5	29.5	46.5
Guernsey	0.2	49.2	24.8	1%	31.5	22.6	34.2

1 Average and median are based on the 1996-2025 period.

April Accumulated Water Year Outflows, values in 1,000 acre-feet

Reservoir	W. Yr. 2026	30 Yr. Avg. ¹	30 Yr. Med. ¹	% of Med.
Seminole	254.4	355.4	306.4	83%
Kortes	254.3	355.3	306.3	83%
Pathfinder	224.8	291.0	277.3	81%
Alcova	222.5	289.1	274.9	81%
Gray Reef	222.3	288.9	274.7	81%
Glendo	9.2	74.7	37.6	25%
Guernsey	1.2	65.7	26.3	5%

APRIL NORTH PLATTE RIVER BASIN RESERVOIR OUTFLOW



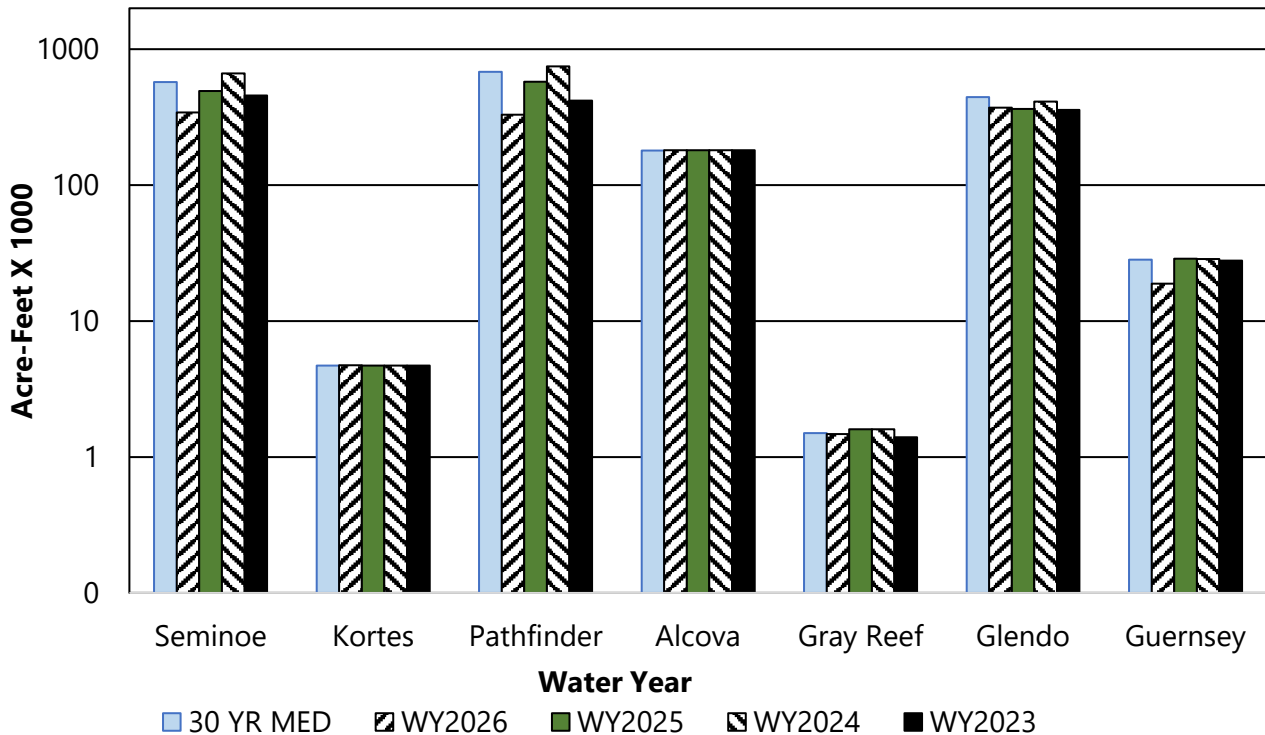
NORTH PLATTE RIVER BASIN RESERVOIR STORAGE

April Storage, Historical Storage, and Storage Capacity in 1,000 acre-feet

Reservoir	W. Yr. 2026	30 Yr. Avg. ¹	30 Yr. Med. ¹	% of Med.	W. Yr. 2025	W. Yr. 2024	W. Yr. 2023	Total Conservation Storage Capacity	Percent of Capacity
Seminole	341.5	551.6	573.8	60%	493.5	662.0	457.4	1017.3	34%
Kortes	4.7	4.7	4.7	100%	4.7	4.7	4.7	4.7	100%
Pathfinder	330.2	663.2	682.3	48%	577.2	748.9	419.3	1070.0	31%
Alcova	180.4	179.9	180.0	100%	180.9	180.2	180.4	184.4	98%
Gray Reef	1.5	1.4	1.5	98%	1.6	1.6	1.4	1.8	82%
Glendo	370.4	443.5	443.0	84%	363.6	412.3	358.4	492.0	75%
Guernsey	18.9	26.5	28.3	67%	28.7	28.5	27.8	45.6	41%
Total	1247.6	1870.8	1913.5	65%	1650.3	2038.2	1449.3	2815.8	44%

¹ Average is based on the 1996-2025 period.

APRIL NORTH PLATTE RIVER BASIN RESERVOIR STORAGE



INLAND LAKES RESERVOIR STORAGE

April Storage, Historical Storage, and Storage Capacity in acre-feet

Reservoir	W. Yr. 2026	30 Yr. Avg. ⁵	30 Yr. med. ⁵	% of Med	Total Storage Capacity
Lake Alice	0	3,188	3,242	0%	11,034 ¹
Little Lake Alice	124	271	344	36%	1,166 ²
Lake Winters Creek	438	622	603	73%	1,746 ³
Lake Minatare	18,023	28,525	31,391	57%	58,795 ⁴

1 At Elevation 4182.0

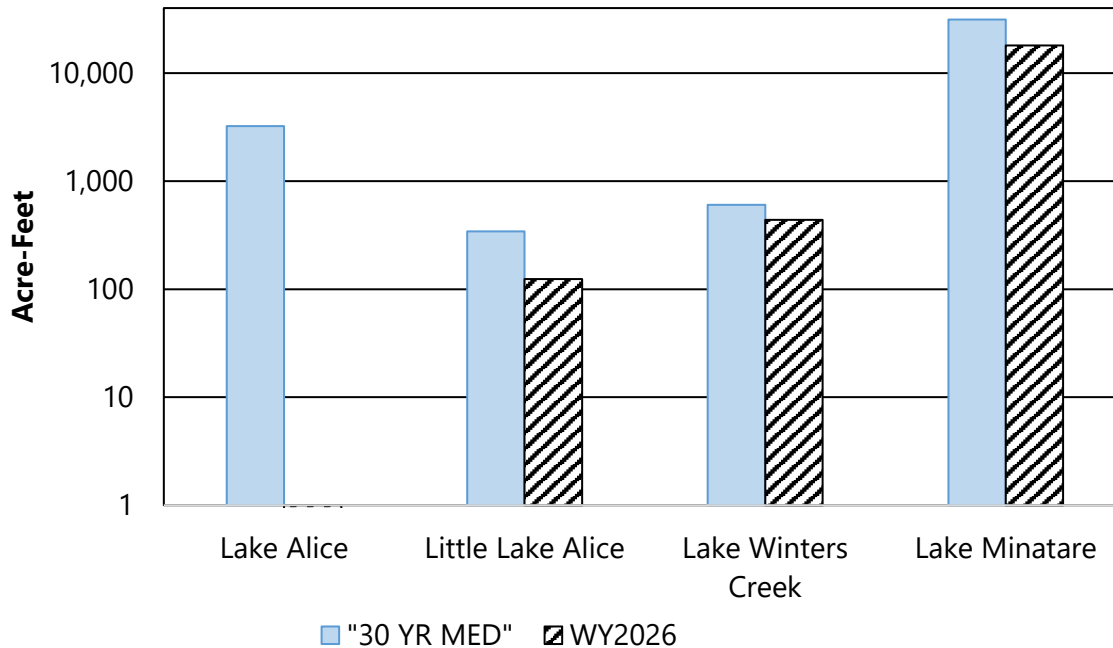
2 At Elevation 4139.0

3 At Elevation 4129.0

4 At Elevation 4125.0

5 30 year average. (1996-2025)

APRIL INLAND LAKES RESERVOIR STORAGE



NORTH PLATTE RIVER BASIN RESERVOIR STORAGE OWNERSHIP

April Ownership Storage, Historical Storage, and Storage Capacity in 1,000 acre-feet

Reservoir	W. Yr. 2026	30 Yr. Avg. ⁷	30 Yr. Med. ⁷	% of Med.	W. Yr. 2025	W. Yr. 2024	W. Yr. 2023	Total Conservation Storage Capacity	Percent of Capacity
Kendrick	696.5	893.7	950.7	73%	815.2	901.3	818.3	1201.7	58%
North Platte ¹	424.5	785.3	865.3	49%	680.2	929.9	490.3	1115.6	38%
Glendo	99.2	140.9	161.1	62%	124.5	160.7	114.1	171.7	58%
Inland Lakes ²	17.1	21.0	22.0	78%	10.8	23.2	11.7	46.0	37%
Cheyenne ^{3,4}	6.5	9.0	9.1	72%	10.5	10.0	12.9	15.7	41%
PacifiCorp ⁵	1.9	2.0	2.0	97%	2.0	2.0	2.0	2.0	97%
Other ⁶	1.9	21.7	10.8	18%	7.2	11.3	0.1	N/A	N/A

1 This includes North Platte Guernsey and North Platte Pathfinder.

2 Water stored temporarily in mainstem facilities for later transfer to the Inland Lakes. This table does not reflect water currently stored in the Inland Lakes.

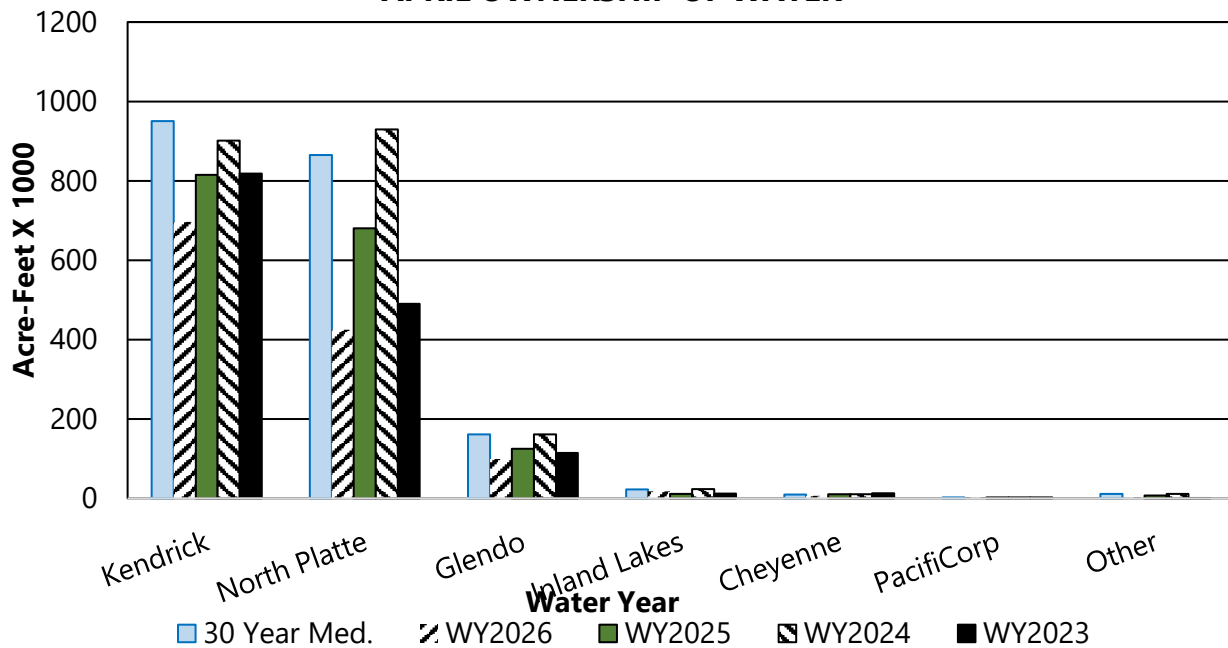
3 The City of Cheyenne has a storage contract to store water in Seminoe Reservoir by exchange of Upper North Platte Basin water through a system of trans-basin diversions.

4 Cheyenne ownership was increased to 15,700 AF on March 13, 2009 as a result of Amendment No. 1 to Contract No. 06XX6A0062.

5 PacifiCorp has a storage contract to store water in Glendo Reservoir for Dave Johnston Powerplant.

6 Water which is captured in the re-regulation space of Glendo in addition to storage rights, Operational water account, and replacement of evaporation losses is labeled as 'Re-regulation of Natural Flow' per Wyoming Board of Control Order Docket Number I-2000-3-8 in water Division Number One. In accordance with 2022 Natural Flow and Ownership Procedures, the Operational account can contain up to 15,000 acre-feet. On April 30, 2026, the Operational account contained 1,896 Acre-feet, the Re-Regulation space contained 0 Acre-feet.

APRIL OWNERSHIP OF WATER



NORTH PLATTE RIVER BASIN GROSS GENERATION

April Gross Generation and Historical Generation in Giga Watt Hours

Powerplant	W. Yr. 2026	30 Yr. Avg. ²	30 Yr. Med. ²	% of Med.	W. Yr. 2025	W. Yr. 2024	W. Yr. 20242
Seminoe	3.5	15.0	14.4	24%	9.6	14.3	15.7
Kortes	5.2	15.3	15.7	33%	10.8	15.5	18.6
Fremont Canyon ¹	12.8	24.1	21.2	60%	27.0	17.2	12.8
Alcova	3.1	9.0	6.8	45%	9.8	4.2	2.9
Glendo	0.0	5.0	2.0	0%	3.9	2.0	3.6
Guernsey	0.0	1.6	1.3	N/A	2.0	1.4	2.2

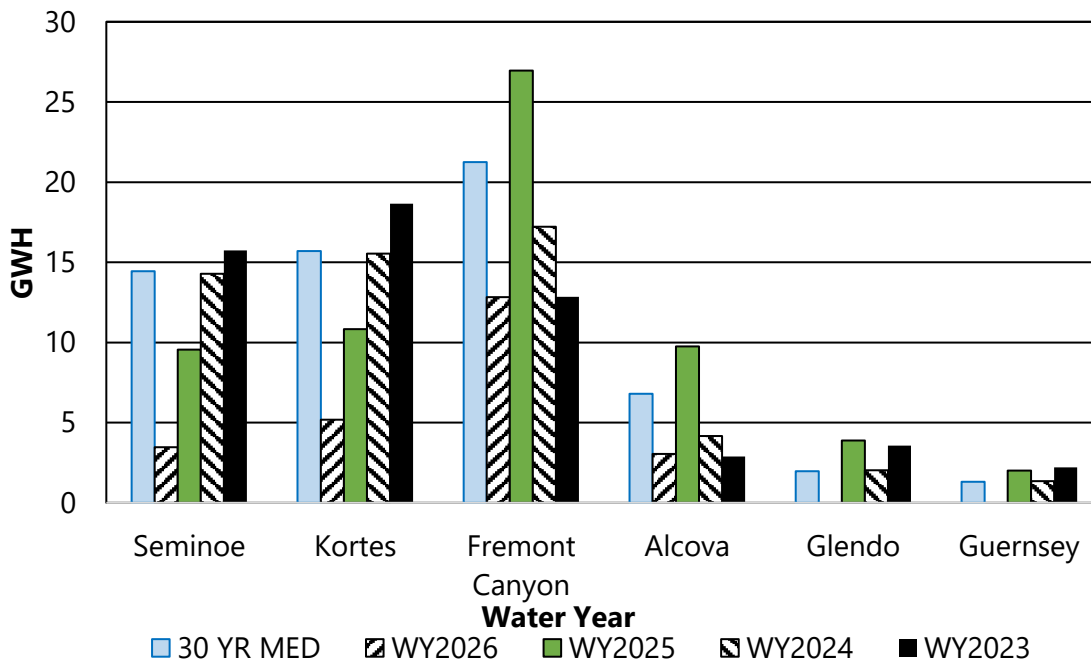
1 The powerplant for Pathfinder Dam is Fremont Canyon.

2 Average is based on the 1996-2025 period.

April Accumulated Gross Generation Water Year in Giga Watt Hours

Powerplant	W. Yr. 2026	30 Yr. Avg. ²	30 Yr. Med. ²	% of Med.
Seminoe	25.3	51.0	41.7	61%
Kortes	33.8	55.1	49.6	68%
Fremont Canyon ¹	49.1	67.8	59.2	83%
Alcova	22.3	32.1	30.7	73%
Glendo	0.0	6.3	2.0	0%
Guernsey	0.0	1.9	1.3	0%

APRIL NORTH PLATTE RIVER GROSS GENERATION



NORTH PLATTE SNOWPACK WATER CONTENT

The tables shown below display the Snotel Sites used in the development of the April-July snowmelt runoff forecasts

May 1st Snow Water Equivalent

SWE in inches ¹

WATERSHED	W. Yr. 2026 ³	30 Yr. Median ²	% of Median	W. Yr. 2025	W. Yr. 2024	W. Yr. 2023
Seminole Reservoir	8.0	20.5	39%	16.2	21.6	27.2
Pathfinder Reservoir	7.5	15.3	49%	15.7	17.5	20.5
Glendo Reservoir	0.5	9.3	5%	5.5	8.7	12.4

Seminole Reservoir Watershed

SWE in inches ¹

Snotel Stations (Elevation)	Water Content ³	30 Yr. Median ²
Arapaho Ridge (10,960)	8.9	23.2
Columbine (9,160)	0.0	17.4
Divide Peak (8,880)	0.2	16.1
Joe Wright (10,120)	3.6	22.5
Laprele Creek (8,375)	0.4	6.5
Never Summer (10,280)	12.9	22.2
North French (10,130)	17.5	32.4
Old Battle (10,000)	23.4	35.5
Rawah (9,020)	0.4	6.8
Sage Creek Basin (7,850)	0	1.8
Sand Lake (10,050)	20.8	31.2
South Brush (8,440)	0.4	6.8
Tower (10,500)	25.8	46.2
Webber Springs (9,250)	5.4	21.6
Willow Creek Pass (9,540)	7.8	15.5
Zirkel (9,340) ⁴	0.6	22.8
Watershed Average	8.0	20.5

Sweetwater River / Pathfinder Reservoir Watershed

SWE in inches ¹

Snotel Stations (Elevation)	Water Content ³	30 Yr. Median ²
Deer Park (9,700)	8.4	15.5
South Pass (9,040)	6.5	15.0
Watershed Average	7.5	15.3

Glendo Reservoir Watershed

SWE in inches ¹

Snotel Stations (Elevation)	Water Content ³	30 Yr. Median ²
Casper (7,900)	0	12.9
Laprele Creek (8,375)	0.4	6.5
Reno Hill (8,500)	1.4	13.6
Windy Peak (7,900)	0	4.1
Watershed Average	0.5	9.3

¹ SWE (Snow Water Equivalent is the amount of water in the snowpack expressed in inches)

² Median for the 1991-2020 period

³ Data from NRCS Snowpack Telemetry Network (SNOTEL) Sites.

⁴ Zirkel is a newer gage starting WY 2003, NRCS median is 23 years of data within 1991-2020 time period.

NORTH PLATTE ESTIMATED APRIL-JULY RUNOFF

(1000 acre-feet)

Forecast Points	May 1, 2026 Forecast of April-July Runoff			30 Yr. April-July Runoff Avg. ²	30 Yr. Apr - Jul Runoff Med. ²	Expected % of Med.	Comparative Actual April - July Runoff		
	Reasonable Maximum ¹	Expected	Reasonable Minimum ¹				W. Yr. 2025	W. Yr. 2024	W. Yr. 2023
	Seminole Reservoir	200	130				90	705	643
Sweetwater River Above Pathfinder Reservoir	35	15	10	51	41	37%	27	46	112
Alcova to Glendo	70	10	5	135	121	8%	48	98	227
Total	305	155	105	891	805	19%	426	774	1308

¹ The probability is estimated to be 9 chances in 10 that the actual volume will fall between the reasonable minimum and reasonable maximum.

² Average and median is based on the 1996-2025 period.

(1000 acre-feet)

Forecast Points	May 1, 2026 Forecast of April-July Runoff Chance of Exceeding						30 Yr. Apr - Jul Runoff Avg. ²	30 Yr. Apr - Jul Runoff Med. ²
	95%	75%	50%	% of Avg	25%	5%		
	Seminole Reservoir	90	114	130	18	159		
Sweetwater River Above Pathfinder Reservoir	10	13	15	29	23	35	51	41
Alcova to Glendo Gain	5	8	10	7	35	70	135	121